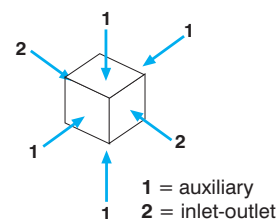


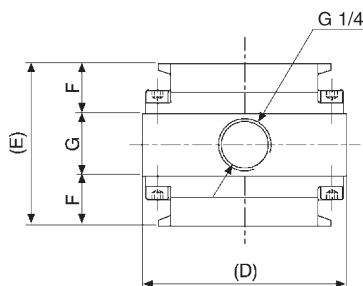
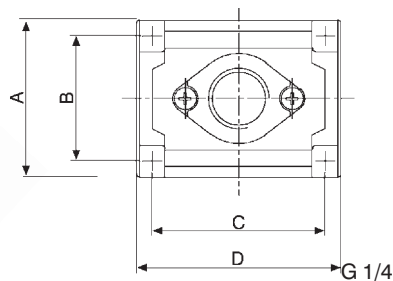
Diverter block, available in 2 sizes with 3 ports each.

<b>size 1</b>	<b>1/4 - 3/8 - 1/2</b>
<b>size 2</b>	<b>3/8 - 1/2 - 3/4</b>

Auxiliary ports on 4 sides are G 1/4 GAS.



	<b>HZ1N ... Size 1</b>	<b>HZ2N ... Size 2</b>
Threaded port	G 1/4 - G 3/8 - G 1/2	G 3/8 - G 1/2 - G 3/4
FlowrateNI/min (7 bar inlet pressure, 6 bar outlet pressure - Δp 1 bar)	G 1/4 - 9800 G 3/8 - 10300 G 1/2 - 11200	G 3/8 - 13700 G 1/2 - 15300 G 3/4 - 16900
Max. inlet pressure <b>bar</b> - MPa - psi	<b>10</b> - 1 - 145	
Fluid	filtered air	
Min/max. temperature °C	5 ÷ 60	
weight in kg	0,30	0,45



Overall dimensions

	<b>Size 1</b>	<b>Size 2</b>
<b>A</b>	<b>50</b>	<b>50</b>
<b>B</b>	<b>40</b>	<b>42</b>
<b>C</b>	<b>55</b>	<b>73</b>
<b>D</b>	<b>63</b>	<b>80</b>
<b>E</b>	<b>52</b>	<b>58</b>
<b>F</b>	<b>16</b>	<b>19</b>
<b>G</b>	<b>20</b>	<b>20</b>